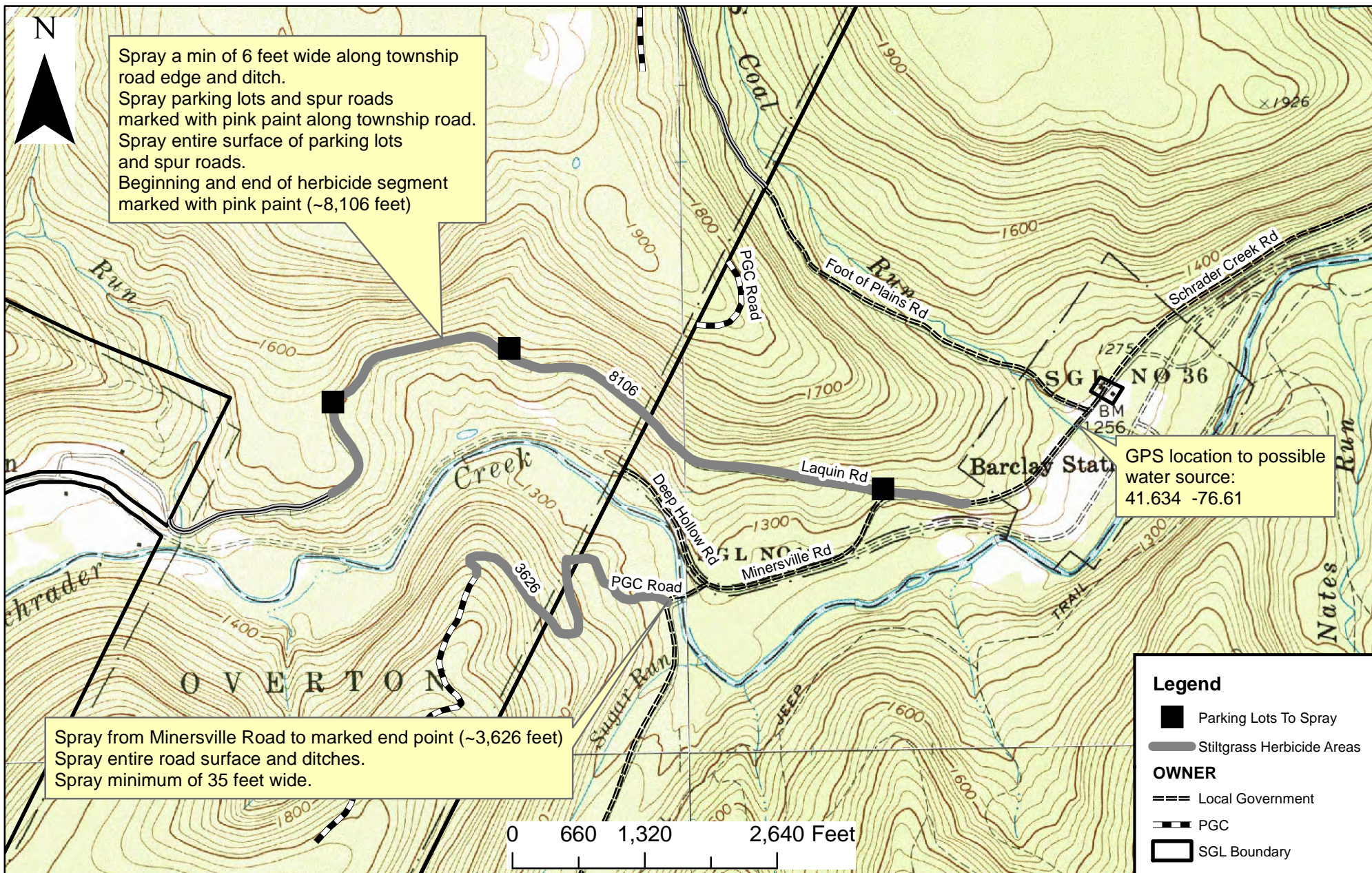


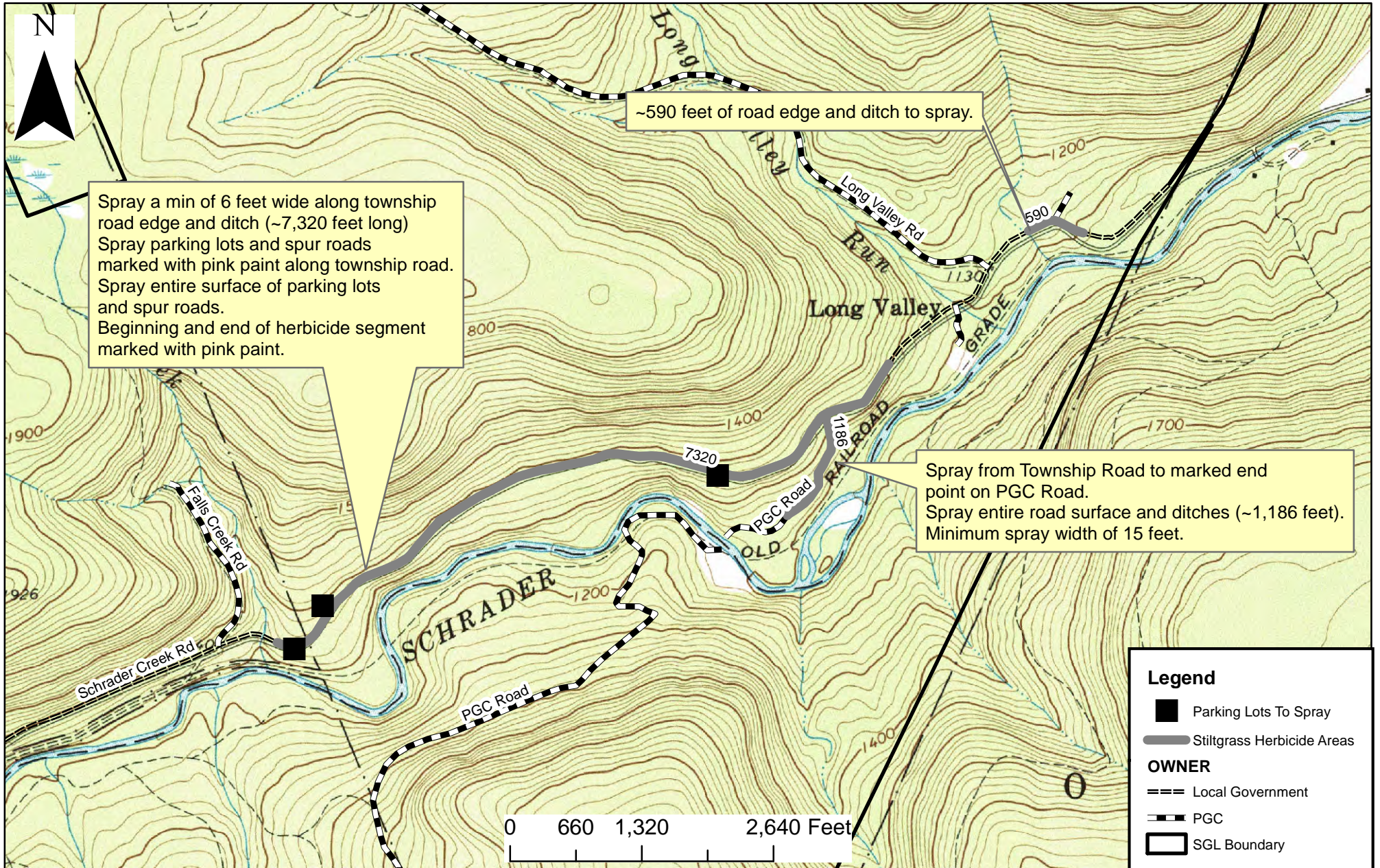
Schrader Creek Herbicide Project Map A

Total area to spray:
9 Acres



Schrader Creek Herbicide Project Map B

Total area to spray:
9 Acres



Spray a min of 6 feet wide along township road edge and ditch (~7,320 feet long)
Spray parking lots and spur roads marked with pink paint along township road.
Spray entire surface of parking lots and spur roads.
Beginning and end of herbicide segment marked with pink paint.

~590 feet of road edge and ditch to spray.

Spray from Township Road to marked end point on PGC Road.
Spray entire road surface and ditches (~1,186 feet).
Minimum spray width of 15 feet.

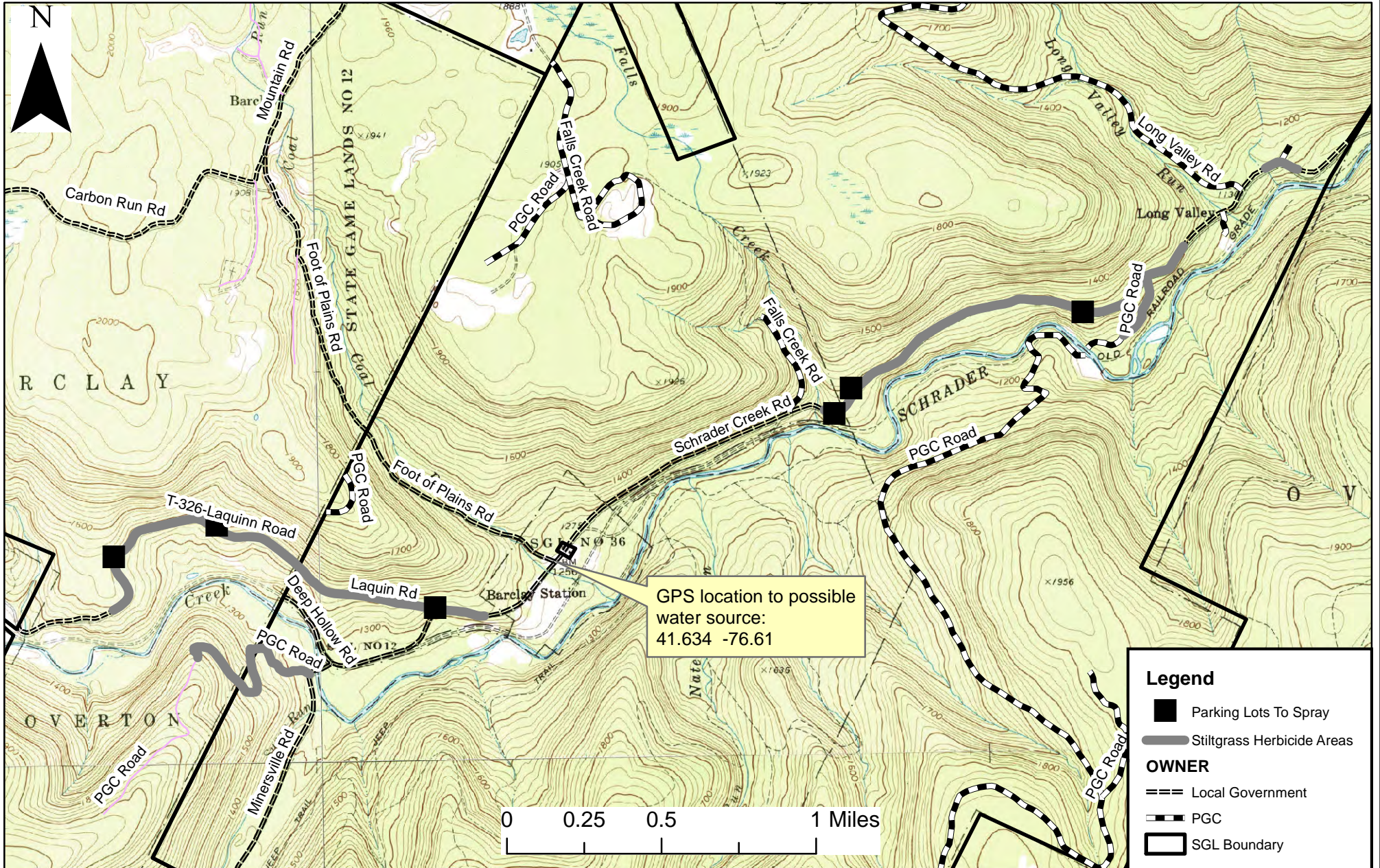
Legend

- Parking Lots To Spray
- ▬ Stiltgrass Herbicide Areas

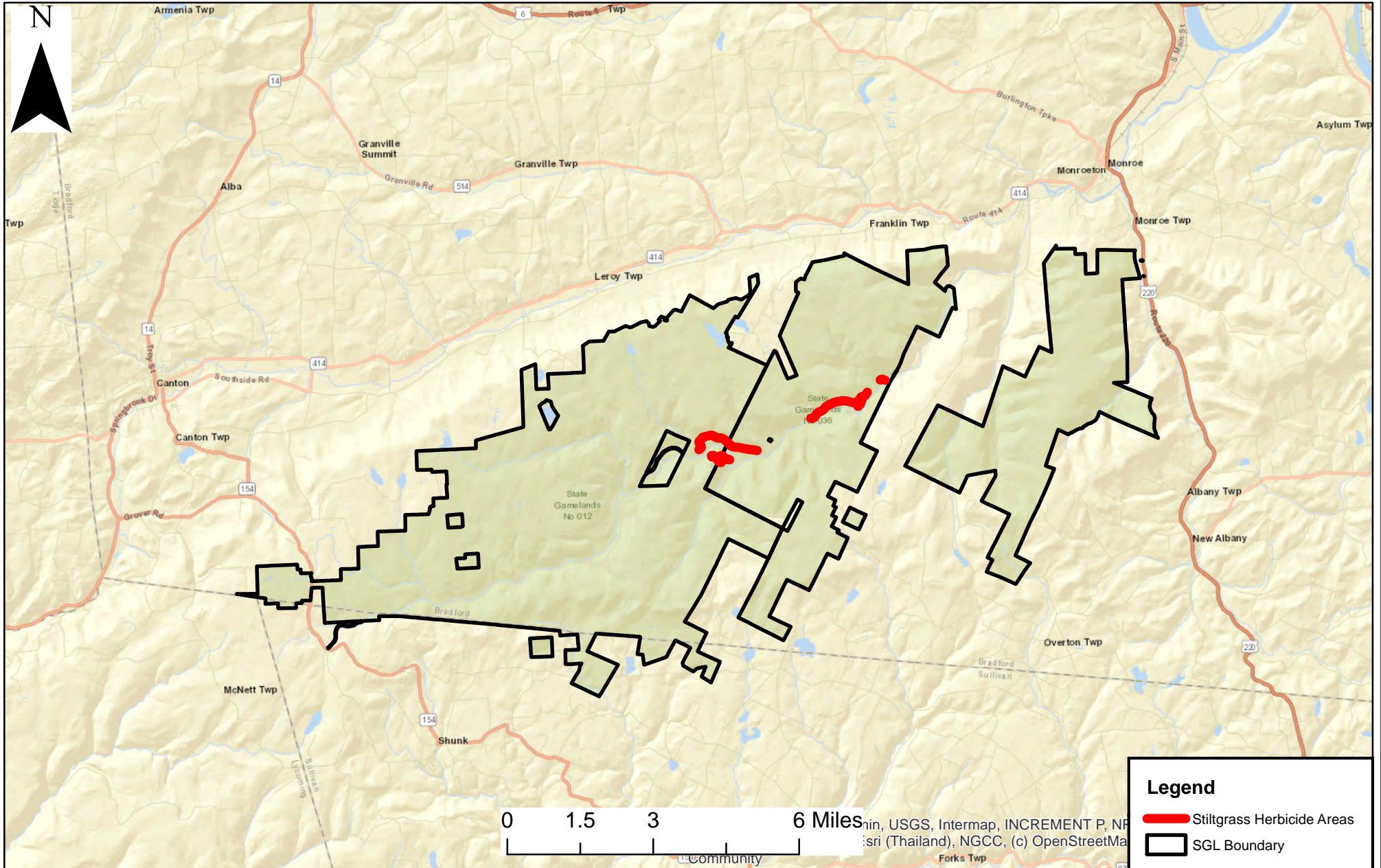
OWNER

- === Local Government
- PGC
- SGL Boundary

Schrader Creek Herbicide Project Overview Map



Schrader Creek Herbicide Project Location Map



SGL: 159
 County(s): Wayne
 Township(s): Lebanon
 Created by: dlenzi

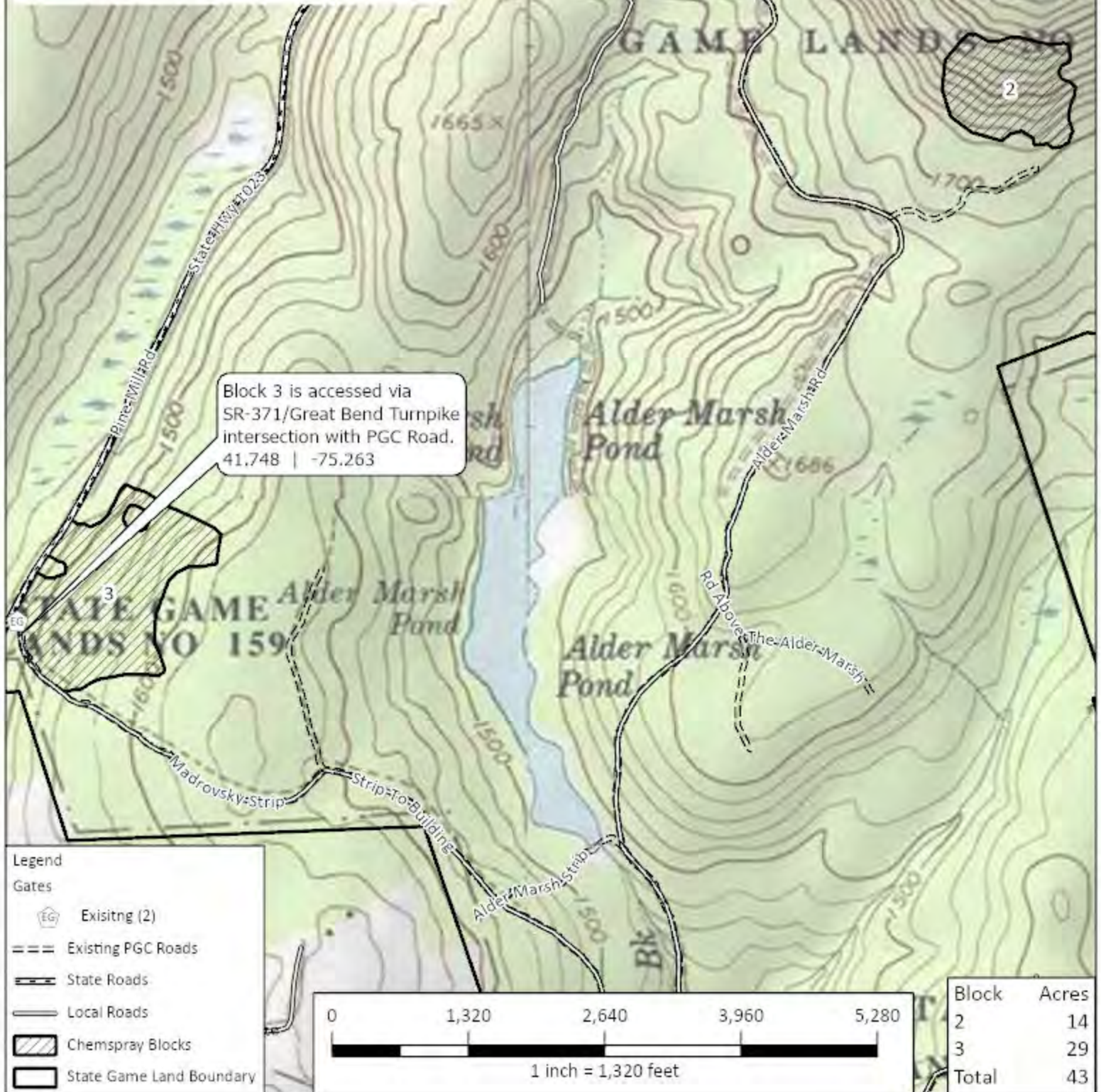
Project Map

Lyme Zone Map A

159-2023-02



The project consists of 6 blocks. The block boundaries are painted with two blue slashes. Existing log landings can be used for staging. logging slash is heavy in spots. Blocks were machine sprayed in summer of 2022. This is a spot spray treatment. Upper Woods Pond and Dyberry Creek are possible water sources.

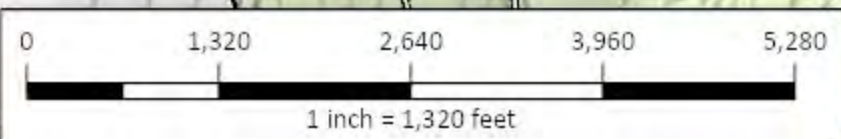


Block 3 is accessed via SR-371/Great Bend Turnpike intersection with PGC Road. 41.748 | -75.263

Block 2 is accessed via SR-371/Great Bend Turnpike intersection with PGC Road. 41.763 | -75.251

Legend

- Gates
- EG Existing (2)
- === Existing PGC Roads
- State Roads
- Local Roads
- ▨ Chemspray Blocks
- State Game Land Boundary



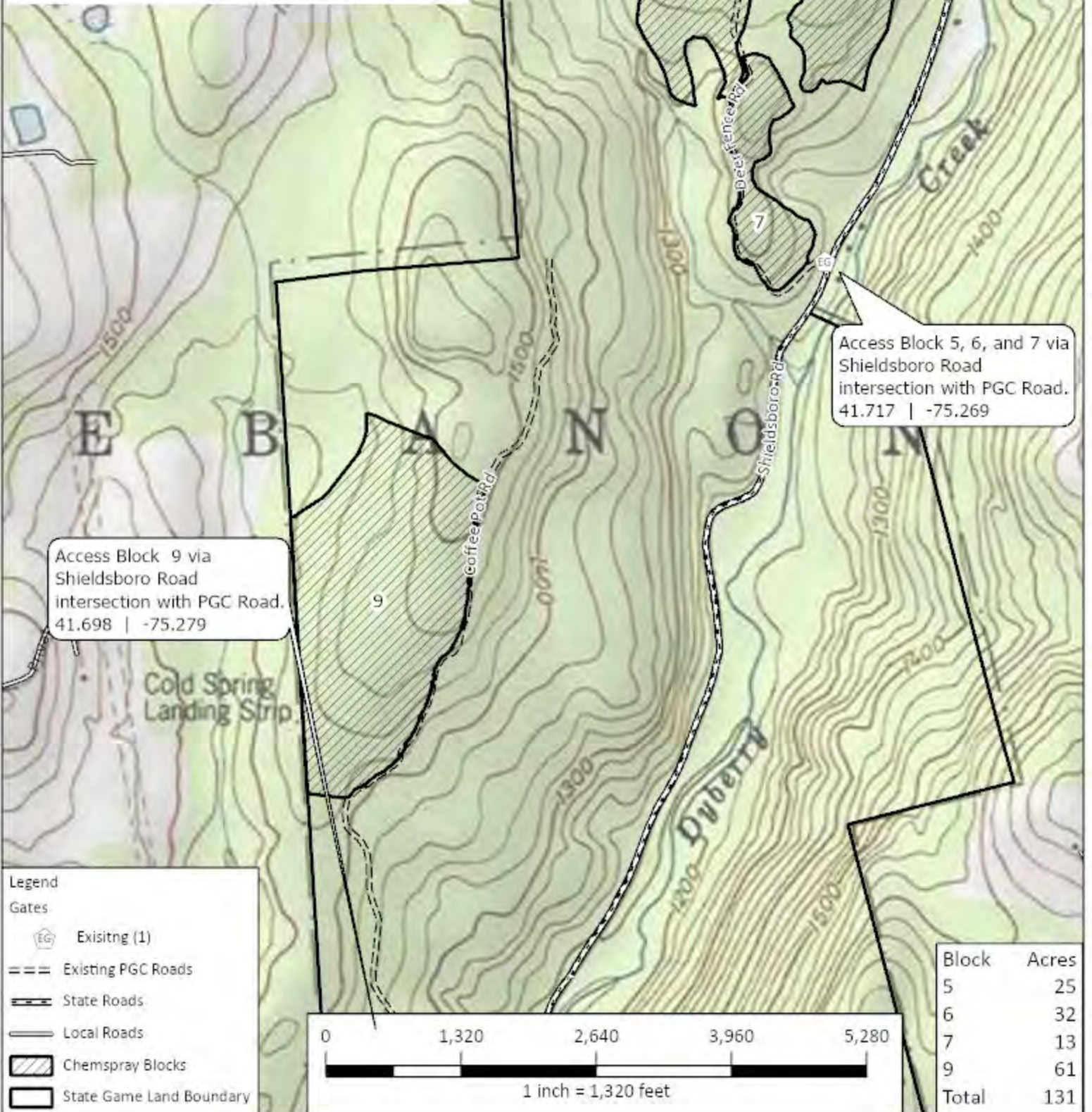
Block	Acres
2	14
3	29
Total	43

SGL: 159
 County(s): Wayne
 Township(s): Lebanon
 Created by: dlenzi

Project Map Lyme Zone 159-2023-02 Map B



The project consists of 6 blocks. The block boundaries are painted with two blue slashes. Existing log landings can be used for staging. logging slash is heavy in spots. Blocks were machine sprayed in summer of 2022. This is a spot spray treatment. Upper Woods Pond and Dyberry Creek are possible water sources.



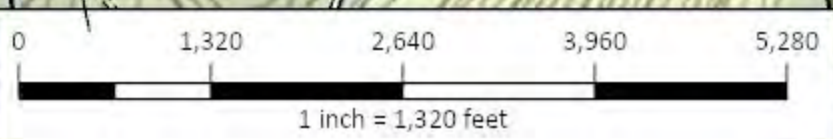
Access Block 5, 6, and 7 via Shieldsboro Road intersection with PGC Road. 41.717 | -75.269

Access Block 9 via Shieldsboro Road intersection with PGC Road. 41.698 | -75.279

Legend

- Gates
- Existing (1)
- Existing PGC Roads
- State Roads
- Local Roads
- Chemspray Blocks
- State Game Land Boundary

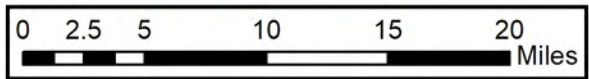
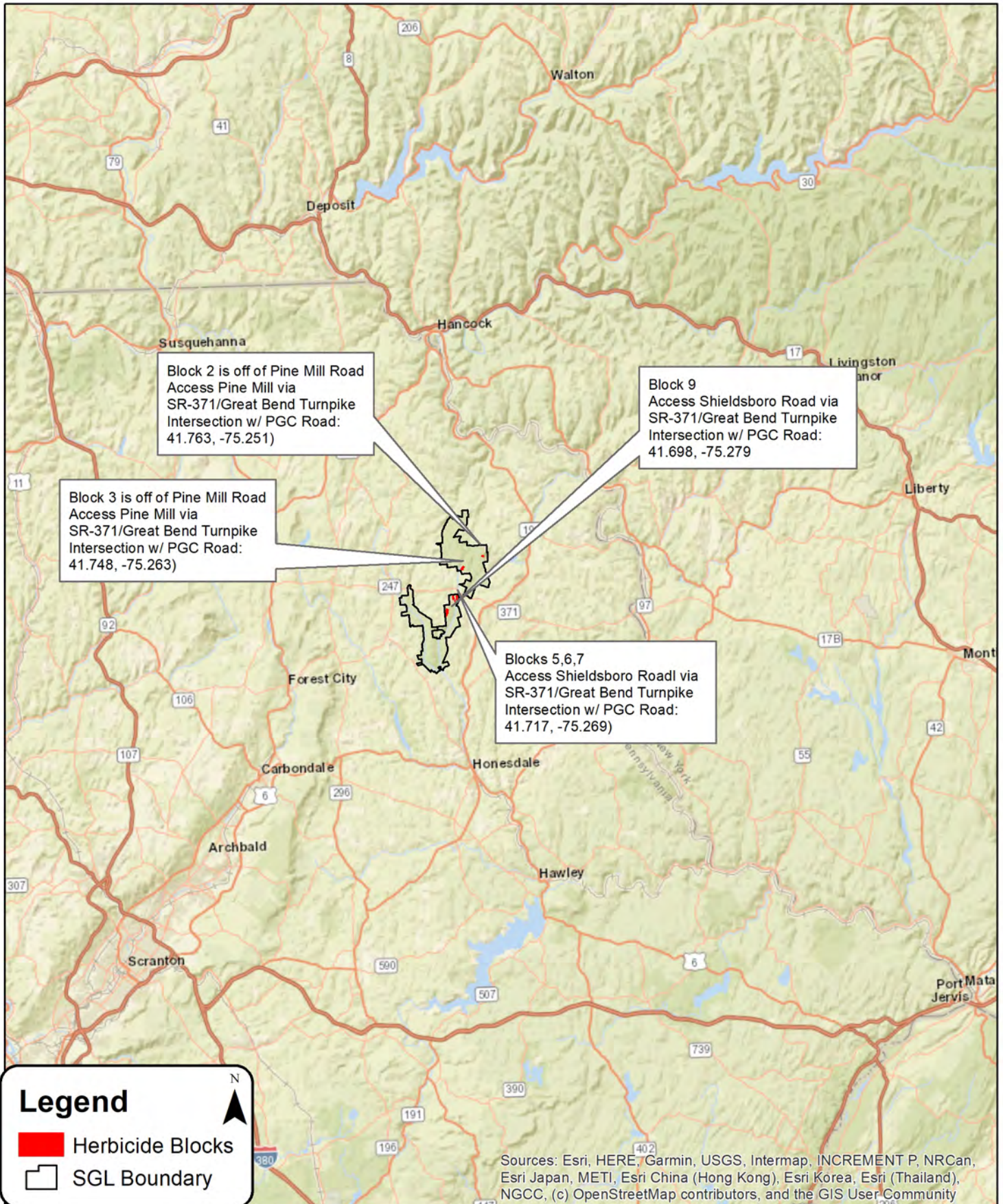
Block	Acres
5	25
6	32
7	13
9	61
Total	131





Lyme Zone Broadcast Herbicide Location Map State Game Lands 159 Wayne County, Lebanon Township

1 inch = 7.89 miles

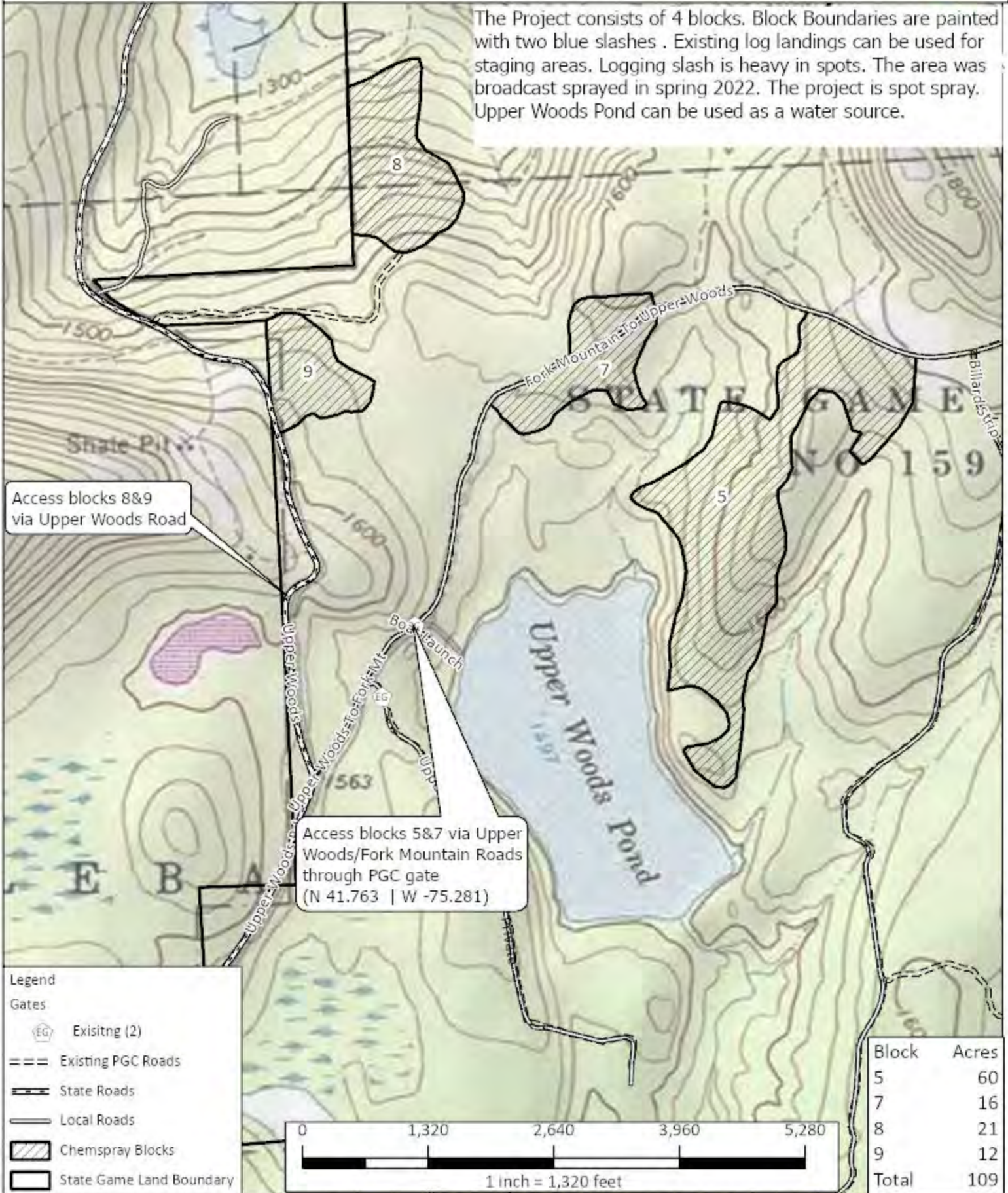


SGL: 159
 County(s): Wayne
 Township(s): Lebanon and Manchester
 Created by: dlenzi

Project Map North Ash Dust 159202303



The Project consists of 4 blocks. Block Boundaries are painted with two blue slashes. Existing log landings can be used for staging areas. Logging slash is heavy in spots. The area was broadcast sprayed in spring 2022. The project is spot spray. Upper Woods Pond can be used as a water source.



SGL: 159
County(s): Wayne
Township(s): Lebanon and Manchester
Created by: dlenzi

Location Map

North Ash Dust Herbicide

159202303

